



**Indira Gandhi Delhi Technical University For Women**  
(Established by Govt. of Delhi vide Act 09 of 2012)  
**Kashmere Gate, Delhi-110006**  
**Department of Electronics and Communication Engineering**



## **An Insight into VLSI Design**

**(15<sup>th</sup> November 2022)**

On November 15, 2022, a virtual event on the topic of "An Insight into VLSI Design" was organized by the ECE department. The event was held online and was attended by 55 participants from various backgrounds. The main speaker for the event was Mr. Samuel Jigme Harrison, who has over 10 years of experience in the field of VLSI design. The event started with a brief introduction of the speaker and an overview of the topic. Mr. Harrison then went on to explain the basics of VLSI design and its importance in the current technological landscape. He explained the various stages of VLSI design, including design entry, simulation, synthesis, layout, and verification. He also highlighted the various challenges faced during the design process and the importance of efficient design techniques.

The speaker also discussed the latest trends and advancements in the field of VLSI design, including the use of artificial intelligence and machine learning techniques in the design process. He emphasized the importance of keeping up with the latest technologies and trends to stay competitive in the field. The event concluded with a Q&A session where participants were able to ask their doubts and queries to the speaker. The participants found the event informative and insightful, and they appreciated the opportunity to interact with an expert in the field.

In conclusion, the event on "An Insight into VLSI Design" was a success, with 55 participants attending and gaining valuable insights into the field of VLSI design. The event provided an opportunity for participants to learn from an expert in the field and interact with like-minded individuals.

Indira Gandhi Delhi Technical University for Women  
Department of Electronics and Communication Engineering presents  
a talk on the topic:

# AN INSIGHT INTO VLSI CIRCUIT DESIGN

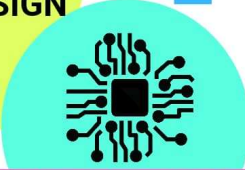
INSTRUCTOR :  
MR SAMUEL JIGME HARRISON  
SEMICONDUCTOR PROFESSIONAL  
( SENIOR MEMBER -IEEE )



Meeting link :  
<https://meet.google.com/jpx-ivve-dky>

DATE : 15 NOVEMBER 2022  
TIME : 11.00AM - 1.00PM (IST)

THIS YEAR - A FACTORY OF SEMICONDUCTORS. NEXT  
YEAR - A FACTORY OF WHOLE CONDUCTORS!



Samuel Tenzing is presenting

- Electronics and Communication Engineering is one of the most demanding courses in the world.
- The applications which make our life easier such as Television, mobiles, computers etc are designed and developed by Electronic and Communication Engineers.
- Graduates in ECE have huge opportunities in Private and Public sector.
- Excellent careers are available in many industries like telecom, mobile companies, consumer electronics, IoT and Robotics etc.

Your screen is still visible to others. Click to resume or cancel your presentation.

11:10 AM | jpx-ivve-dky

Samuel Tenzing is presenting

### Backend Implementation / Physical Design

The circuit representations are converted to geometric description of shapes with various metal layers and when manufactured, the metal layers will ensure the functioning of the circuit.

11:16 AM | jpx-ivve-dky

Samuel Tenzing is presenting

### Backend Implementation / Physical Design

The circuit representations are converted to geometric description of shapes with various metal layers and when manufactured, the metal layers will ensure the functioning of the circuit.

11:16 AM | jpx-ivve-dky

Samuel Tenzing is presenting

### Floorplanning

- Floorplanning is the critical and first step in Physical Design
- Goals of a Good Floorplan
  - Minimized total chip area
  - Routability of the design
  - Minimal congestion
  - Low power consumption

11:24 AM | jpx-ivve-dky

Prof. Nidhi Goel

(Coordinator)

---

**Kashmere Gate, Delhi -110006**  
**Tel.: 011-23869872, E-mail: [hodece@igdtuw.ac.in](mailto:hodece@igdtuw.ac.in)**  
**Website: [www.igdtuw.ac.in](http://www.igdtuw.ac.in)**

**Department Board Size in feet 2.5 x 5**

**DEPARTMENT OF ELECTRONICS AND  
COMMUNICATION ENGINEERING**





**Faculty Room Details Size in feet 3x5**

**GROUND FLOOR:**

<b>ROOM NO.</b>	<b>FACULTY NAME</b>
E-102 A	Prof. Jasdeep Kaur Dhanoa
E-102B	Prof. Nidhi Gooel
E-104 A	Prof. Ashwni Kumar
E-104 B	Research Scholars ECE
E-112	HOD (ECE) OFFICE

**FIRST FLOOR**

<b>ROOM. NO.</b>	<b>FACULTY NAME</b>
E-203	Prof. Vandana Niranjana
E-207	Dr. Shobha Sharma
E-209	Dr. Richa Yadav Ms. Neha Singh
E-221	Dr. Kanchan Sharma
E-222	Dr. Pankaj Gupta

**SECOND FLOOR**

<b>ROOM. NO.</b>	<b>FACULTY NAME</b>
E-301	Dr. Greeshma Arya
E-304	Research Scholars ECE
E-305	Dr. Akash Tayal



**Indira Gandhi Delhi Technical University For Women**  
(Established by Govt. of Delhi vide Act 09 of 2012)  
**Kashmere Gate, Delhi-110006**  
**Department of Electronics and Communication Engineering**



Lecture Hall & Lab Details Size in feet 3x5

**GROUND FLOOR**

<b>ROOM NO.</b>	<b>LECTURE HALL &amp; LAB</b>
E-106	COMPUTER VISION AND IMAGE PROCESSING LAB (CVIP LAB)
E-109	DSP RESEARCH LAB & VLSI LAB

**FIRST FLOOR**

<b>ROOM. NO.</b>	<b>LECTURE HALL &amp; LAB</b>
E-211	MICROPROCESSOR LAB
E-210	ELECTRICAL SCIENCE LAB
E-214	COMMUNICATION SYSTEMS LAB
E-213	LECTURE HALL (B.TECH)
E-215	LECTURE HALL (M.TECH)

**SECOND FLOOR**

<b>ROOM. NO.</b>	<b>LECTURE HALL &amp; LAB</b>
E-307	LECTURE HALL (B.TECH)
E-313	LECTURE HALL (B.TECH)
E-314	LECTURE HALL (B.TECH)
E-315	ANALOG ELECTRONICS LAB & MICROWAVE & RADAR ENGINEERING LAB

SMALL NAME PLATE

<b>S,No</b>	<b>Written matter</b>	<b>QTY.</b>
1.	Dr. Jasdeep Kaur Dhanoa Professor (ECE)	1
2.	Dr. Nidhi Gooel Professor (ECE)	1
3.	Dr. Kanchan Sharma Assistant Professor (ECE)	1
4.	Dr. Greeshma Arya Assistant Professor (ECE)	1
5	CLASS ROOM M. Tech (ECE)	1
6.	CLASS ROOM B. Tech (ECE)	1
7.	E-314	1

